



# COVID-19 Update

Kevin J. Mizikar, Town Manager

January 12, 2021

# Town Manager & COVID-19 Report

## Positive Case Update

- March 19 – January 12, 2021
  - *1,951 Positive Cases, an increase of 627 from last BOS Meeting 12/22*
- January 7, 2021 State Status: RED
  - *66.4 Daily Incidence Per 100,000, an increase of 1.7*
  - *Positivity 9.01%, an increase of 1.36%*
- Town Every Weekday

# Town Manager & COVID-19 Report

## COVID-19 Deaths

- March 19 – January 12, 2021
  - *53, an increase of 5 since last BOS meeting*

## Status of Town Buildings/Staffing & Reopening

- Closed to the public
- Hybrid Model for Employees
- 1<sup>st</sup> Responders started receiving vaccinations 1/11/21

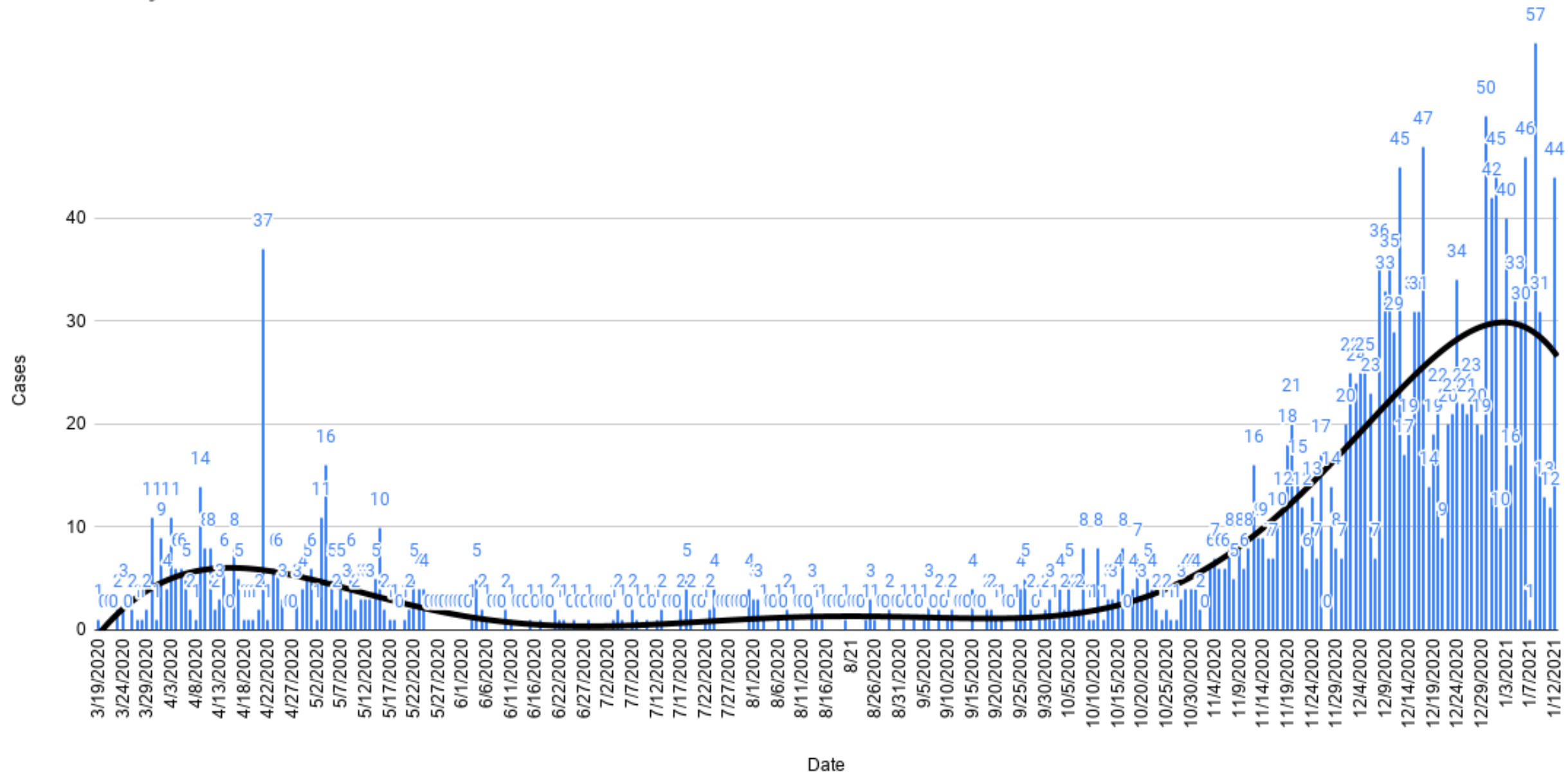
# COVID-19 Positive Case Data 3/19 - 1/12/2021

Month	Cases	Percentage of Total
March	21	1.08%
April	147	7.53%
May	99	5.07%
June	50	2.56%
July	31	1.59%
August	24	1.23%
September	35	1.79%
October	101	5.18%
November	268	13.74%
December	798	40.90%
January	377	19.32%
Ttl Reported Cases	1951	

# COVID-19 Positive Case Data

	Cases	% Total since 3/19/20
Previous 7 Days		11.99%
1/6 - 1/12/2021	234	
Previous 14 Days		23.89%
12/30/20 - 1/12/2021	466	
Previous 30 Days		42.90%
12/14/20 - 1/12/2021	837	
Previous 60 Days		69.50%
11/14/20 - 1/12/2021	1,356	

# Shrewsbury COVID Cases



# COVID-19 Positive Case Data – Age Analysis

9/2/20	12/4/2020	12/18/2020	1/8/2021	% Change 9/2 - 1/8/21
20	115	213	351	1655.00%
61	142	194	268	339.34%
59	143	193	272	361.02%
56	129	193	287	412.50%
62	145	208	303	388.71%
39	81	116	175	348.72%
77	112	137	195	153.25%